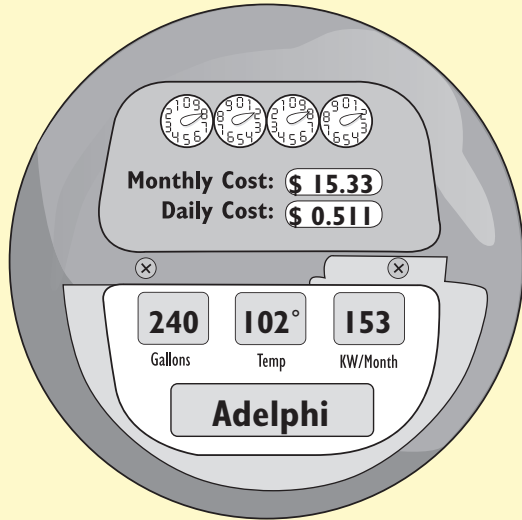


ENERGY INDEX

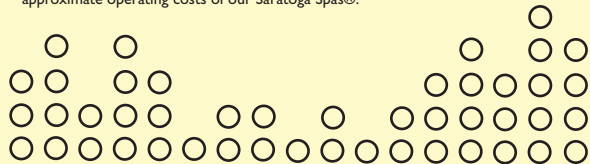
Appliance: Saratoga Spa®
 Model: **Adelphi XL Spa**



The above daily cost is multiplied by 30 days at .10kwh to approximate operational cost.

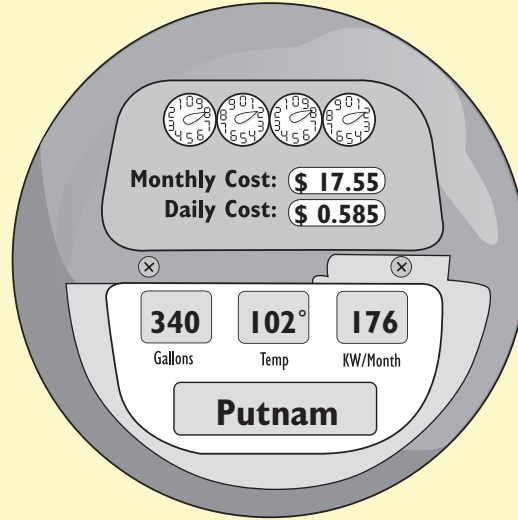
- Maintained temperature, not above 102°
- 24 hour operation of the Purity Circulation™ Pump
- 15 minutes per day operation of the Jet Pump(s)
- *5 minutes per day operation of Jet Pump 3 on the Lincoln, Empire and Broadway spas
- 15 minutes per day heater operation at 5.5kw
- Cover off the spa 30 minutes per day

The operational cost of hot tubs will include many variables, more than any lab test will reveal. Saratoga Spa® understands the hot tub owner will use their hot tub 2-3 times per week during one period, and 4-6 times per week during another period. Ambient temperatures will vary from 50° - 70° across the country, as well as the duration of each use. With this in mind, these are the parameters for determining the approximate operating costs of our Saratoga Spas®.



ENERGY INDEX

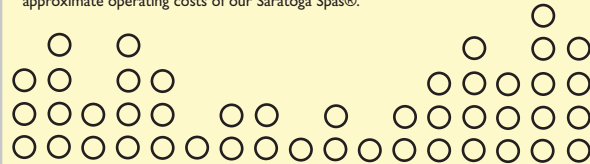
Appliance: Saratoga Spa®
 Model: **Putnam XL Spa**



The above daily cost is multiplied by 30 days at .10kwh to approximate operational cost.

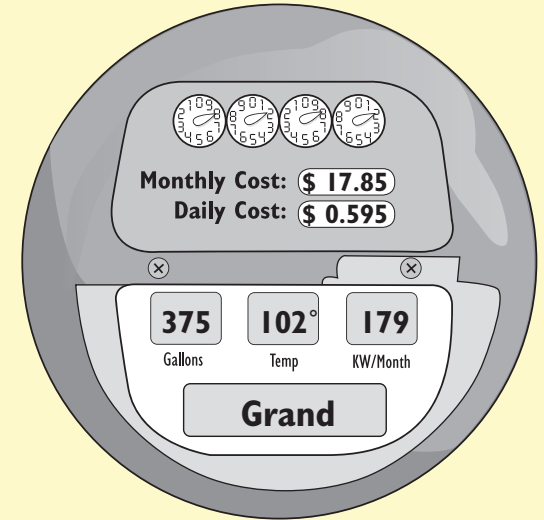
- Maintained temperature, not above 102°
- 24 hour operation of the Purity Circulation™ Pump
- 15 minutes per day operation of the Jet Pump(s)
- *5 minutes per day operation of Jet Pump 3 on the Lincoln, Empire and Broadway spas
- 15 minutes per day heater operation at 5.5kw
- Cover off the spa 30 minutes per day

The operational cost of hot tubs will include many variables, more than any lab test will reveal. Saratoga Spa® understands the hot tub owner will use their hot tub 2-3 times per week during one period, and 4-6 times per week during another period. Ambient temperatures will vary from 50° - 70° across the country, as well as the duration of each use. With this in mind, these are the parameters for determining the approximate operating costs of our Saratoga Spas®.



ENERGY INDEX

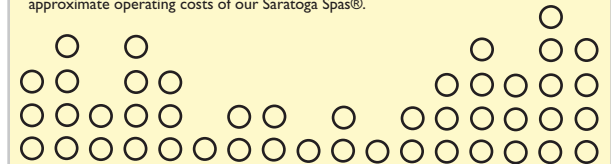
Appliance: Saratoga Spa®
 Model: **Grand XL Spa**



The above daily cost is multiplied by 30 days at .10kwh to approximate operational cost.

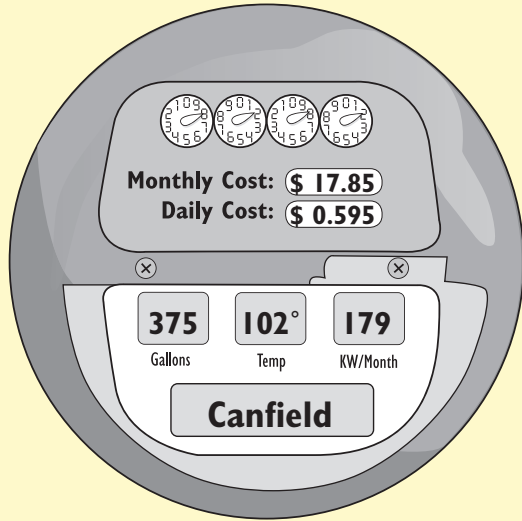
- Maintained temperature, not above 102°
- 24 hour operation of the Purity Circulation™ Pump
- 15 minutes per day operation of the Jet Pump(s)
- *5 minutes per day operation of Jet Pump 3 on the Lincoln, Empire and Broadway spas
- 15 minutes per day heater operation at 5.5kw
- Cover off the spa 30 minutes per day

The operational cost of hot tubs will include many variables, more than any lab test will reveal. Saratoga Spa® understands the hot tub owner will use their hot tub 2-3 times per week during one period, and 4-6 times per week during another period. Ambient temperatures will vary from 50° - 70° across the country, as well as the duration of each use. With this in mind, these are the parameters for determining the approximate operating costs of our Saratoga Spas®.



ENERGY INDEX

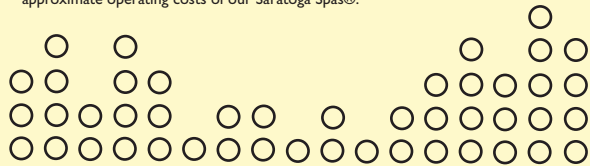
Appliance: Saratoga Spa®
 Model: **Canfield XL Spa**



The above daily cost is multiplied by 30 days at .10kwh to approximate operational cost.

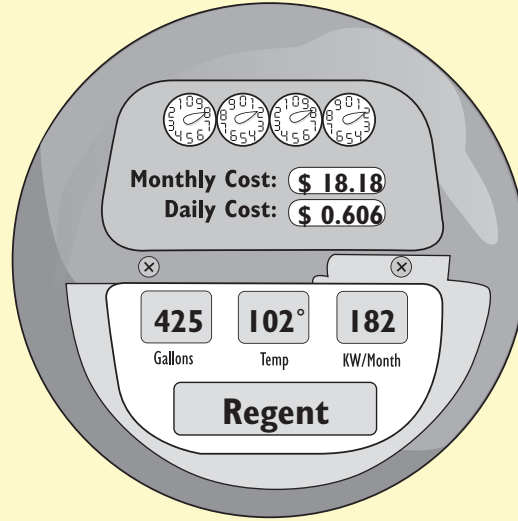
- Maintained temperature, not above 102°
- 24 hour operation of the Purity Circulation™ Pump
- 15 minutes per day operation of the Jet Pump(s)
- *5 minutes per day operation of Jet Pump 3 on the Lincoln, Empire and Broadway spas
- 15 minutes per day heater operation at 5.5kw
- Cover off the spa 30 minutes per day

The operational cost of hot tubs will include many variables, more than any lab test will reveal. Saratoga Spa® understands the hot tub owner will use their hot tub 2-3 times per week during one period, and 4-6 times per week during another period. Ambient temperatures will vary from 50° - 70° across the country, as well as the duration of each use. With this in mind, these are the parameters for determining the approximate operating costs of our Saratoga Spas®.



ENERGY INDEX

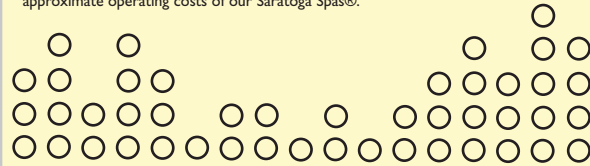
Appliance: Saratoga Spa®
 Model: **Regent XL Spa**



The above daily cost is multiplied by 30 days at .10kwh to approximate operational cost.

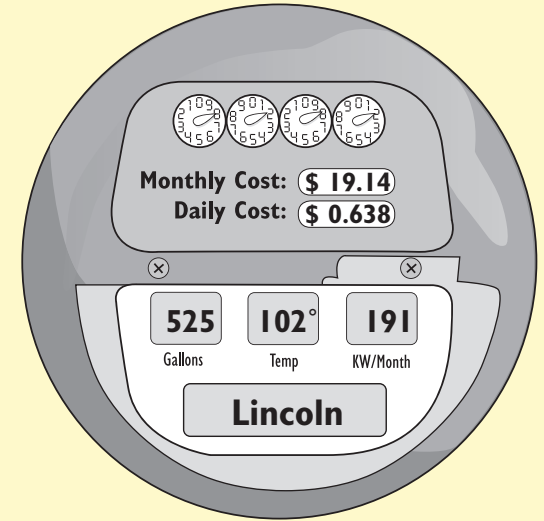
- Maintained temperature, not above 102°
- 24 hour operation of the Purity Circulation™ Pump
- 15 minutes per day operation of the Jet Pump(s)
- *5 minutes per day operation of Jet Pump 3 on the Lincoln, Empire and Broadway spas
- 15 minutes per day heater operation at 5.5kw
- Cover off the spa 30 minutes per day

The operational cost of hot tubs will include many variables, more than any lab test will reveal. Saratoga Spa® understands the hot tub owner will use their hot tub 2-3 times per week during one period, and 4-6 times per week during another period. Ambient temperatures will vary from 50° - 70° across the country, as well as the duration of each use. With this in mind, these are the parameters for determining the approximate operating costs of our Saratoga Spas®.



ENERGY INDEX

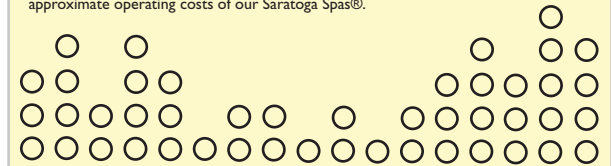
Appliance: Saratoga Spa®
 Model: **Lincoln XL Spa**



The above daily cost is multiplied by 30 days at .10kwh to approximate operational cost.

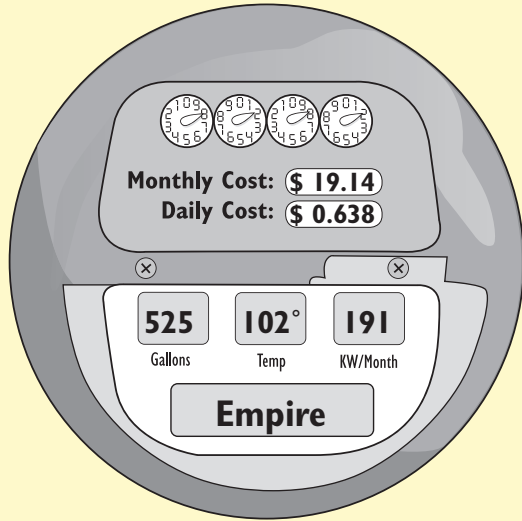
- Maintained temperature, not above 102°
- 24 hour operation of the Purity Circulation™ Pump
- 15 minutes per day operation of the Jet Pump(s)
- *5 minutes per day operation of Jet Pump 3 on the Lincoln, Empire and Broadway spas
- 15 minutes per day heater operation at 5.5kw
- Cover off the spa 30 minutes per day

The operational cost of hot tubs will include many variables, more than any lab test will reveal. Saratoga Spa® understands the hot tub owner will use their hot tub 2-3 times per week during one period, and 4-6 times per week during another period. Ambient temperatures will vary from 50° - 70° across the country, as well as the duration of each use. With this in mind, these are the parameters for determining the approximate operating costs of our Saratoga Spas®.



ENERGY INDEX

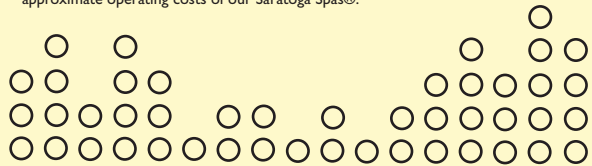
Appliance: Saratoga Spa®
 Model: **Empire XL Spa**



The above daily cost is multiplied by 30 days at .10kwh to approximate operational cost.

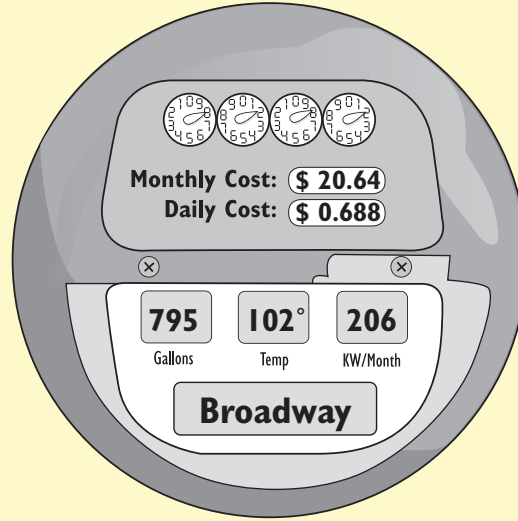
- Maintained temperature, not above 102°
- 24 hour operation of the Purity Circulation™ Pump
- 15 minutes per day operation of the Jet Pump(s)
- *5 minutes per day operation of Jet Pump 3 on the Lincoln, Empire and Broadway spas
- 15 minutes per day heater operation at 5.5kw
- Cover off the spa 30 minutes per day

The operational cost of hot tubs will include many variables, more than any lab test will reveal. Saratoga Spa® understands the hot tub owner will use their hot tub 2-3 times per week during one period, and 4-6 times per week during another period. Ambient temperatures will vary from 50° - 70° across the country, as well as the duration of each use. With this in mind, these are the parameters for determining the approximate operating costs of our Saratoga Spas®.



ENERGY INDEX

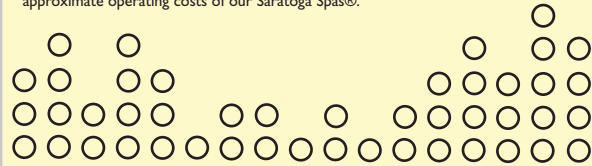
Appliance: Saratoga Spa®
 Model: **Broadway XL Spa**



The above daily cost is multiplied by 30 days at .10kwh to approximate operational cost.

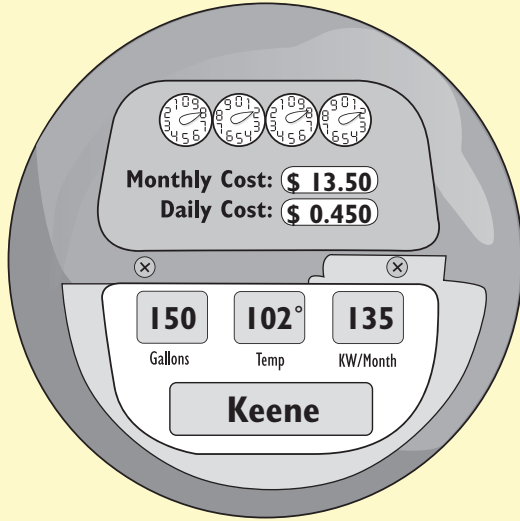
- Maintained temperature, not above 102°
- 24 hour operation of the Purity Circulation™ Pump
- 15 minutes per day operation of the Jet Pump(s)
- *5 minutes per day operation of Jet Pump 3 on the Lincoln, Empire and Broadway spas
- 15 minutes per day heater operation at 5.5kw
- Cover off the spa 30 minutes per day

The operational cost of hot tubs will include many variables, more than any lab test will reveal. Saratoga Spa® understands the hot tub owner will use their hot tub 2-3 times per week during one period, and 4-6 times per week during another period. Ambient temperatures will vary from 50° - 70° across the country, as well as the duration of each use. With this in mind, these are the parameters for determining the approximate operating costs of our Saratoga Spas®.



ENERGY INDEX

Appliance: Saratoga Spa®
Model: **Keene SE Spa**

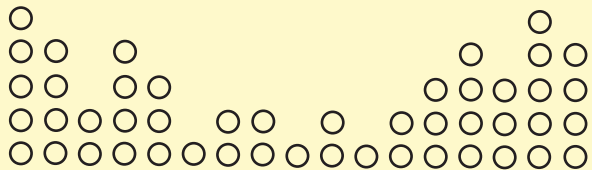


*These costs reflect the Thermal Bond™ Wrap Insulation System

The above daily cost is multiplied by 30 days at .10kwh to approximate operational cost.

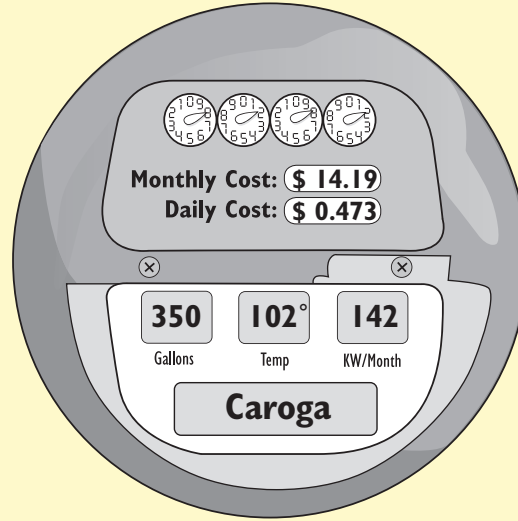
- Maintained temperature, not above 102°
- 2 hours of filtration every 12 hours
- 15 minutes per day operation of the Jet Pump(s)
- 15 minutes per day heater operation at 4kw
- Cover off the spa 30 minutes per day

The operational cost of hot tubs will include many variables, more than any lab test will reveal. Saratoga Spa® understands the hot tub owner will use their hot tub 2-3 times per week during one period, and 4-6 times per week during another period. Ambient temperatures will vary from 50°- 70° across the country, as well as the duration of each use. With this in mind, these are the parameters for determining the approximate operating costs of our Saratoga Spas.®



ENERGY INDEX

Appliance: Saratoga Spa®
Model: **Caroga SE Spa**

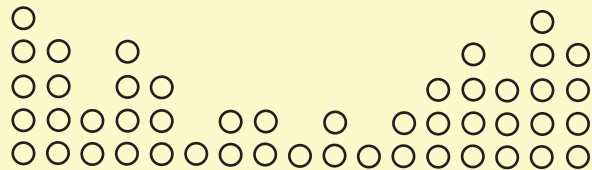


*These costs reflect the Thermal Bond™ Wrap Insulation System

The above daily cost is multiplied by 30 days at .10kwh to approximate operational cost.

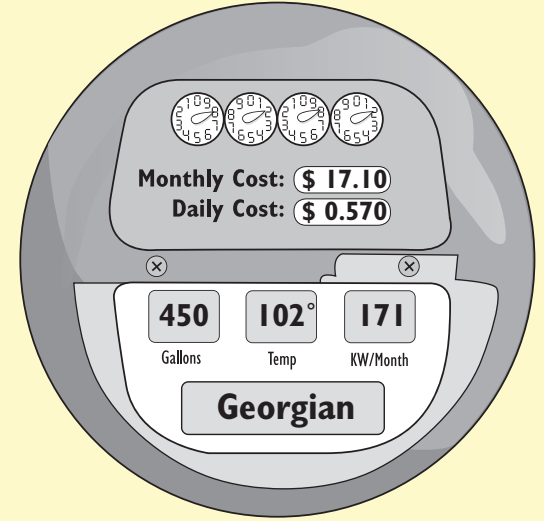
- Maintained temperature, not above 102°
- 2 hours of filtration every 12 hours
- 15 minutes per day operation of the Jet Pump(s)
- 15 minutes per day heater operation at 4kw
- Cover off the spa 30 minutes per day

The operational cost of hot tubs will include many variables, more than any lab test will reveal. Saratoga Spa® understands the hot tub owner will use their hot tub 2-3 times per week during one period, and 4-6 times per week during another period. Ambient temperatures will vary from 50°- 70° across the country, as well as the duration of each use. With this in mind, these are the parameters for determining the approximate operating costs of our Saratoga Spas.®



ENERGY INDEX

Appliance: Saratoga Spa®
Model: **Georgian SE Spa**

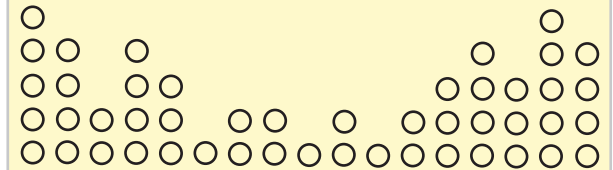


*These costs reflect the Thermal Bond™ Wrap Insulation System

The above daily cost is multiplied by 30 days at .10kwh to approximate operational cost.

- Maintained temperature, not above 102°
- 2 hours of filtration every 12 hours
- 15 minutes per day operation of the Jet Pump(s)
- 15 minutes per day heater operation at 4kw
- Cover off the spa 30 minutes per day

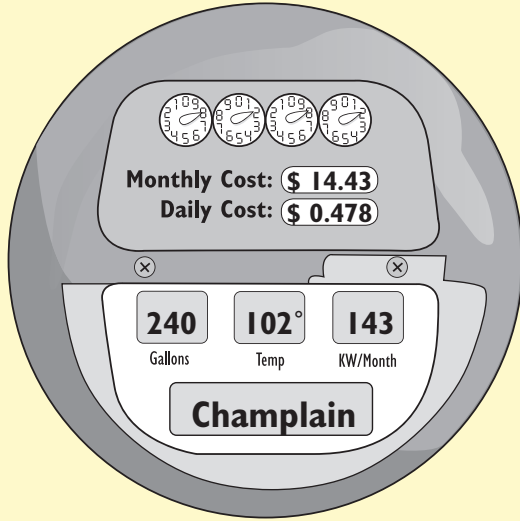
The operational cost of hot tubs will include many variables, more than any lab test will reveal. Saratoga Spa® understands the hot tub owner will use their hot tub 2-3 times per week during one period, and 4-6 times per week during another period. Ambient temperatures will vary from 50°- 70° across the country, as well as the duration of each use. With this in mind, these are the parameters for determining the approximate operating costs of our Saratoga Spas.®



ENERGY INDEX

Appliance: Saratoga Spa®

Model: **Champlain SE Spa**

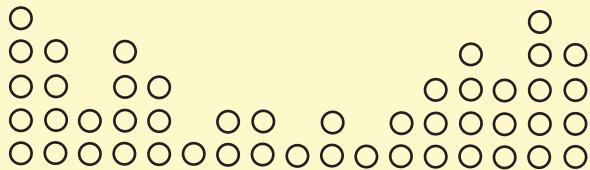


*These costs reflect the Thermal Bond™ Wrap Insulation System

The above daily cost is multiplied by 30 days at .10kwh to approximate operational cost.

- Maintained temperature, not above 102°
- 2 hours of filtration every 12 hours
- 15 minutes per day operation of the Jet Pump(s)
- 15 minutes per day heater operation at 4kw
- Cover off the spa 30 minutes per day

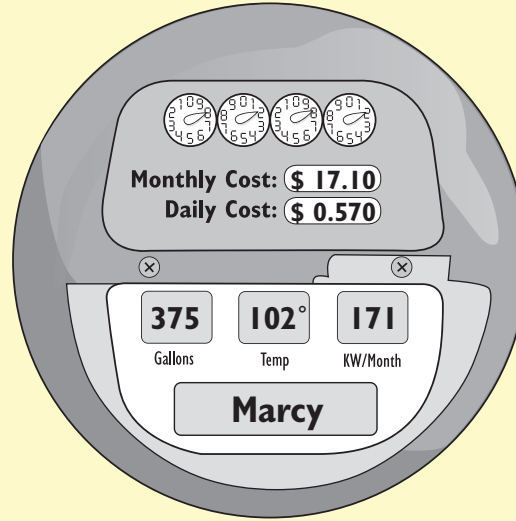
The operational cost of hot tubs will include many variables, more than any lab test will reveal. Saratoga Spa® understands the hot tub owner will use their hot tub 2-3 times per week during one period, and 4-6 times per week during another period. Ambient temperatures will vary from 50°- 70° across the country, as well as the duration of each use. With this in mind, these are the parameters for determining the approximate operating costs of our Saratoga Spas.®



ENERGY INDEX

Appliance: Saratoga Spa®

Model: **Marcy SE Spa**



*These costs reflect the Thermal Bond™ Wrap Insulation System

The above daily cost is multiplied by 30 days at .10kwh to approximate operational cost.

- Maintained temperature, not above 102°
- 2 hours of filtration every 12 hours
- 15 minutes per day operation of the Jet Pump(s)
- 15 minutes per day heater operation at 4kw
- Cover off the spa 30 minutes per day

The operational cost of hot tubs will include many variables, more than any lab test will reveal. Saratoga Spa® understands the hot tub owner will use their hot tub 2-3 times per week during one period, and 4-6 times per week during another period. Ambient temperatures will vary from 50°- 70° across the country, as well as the duration of each use. With this in mind, these are the parameters for determining the approximate operating costs of our Saratoga Spas.®

